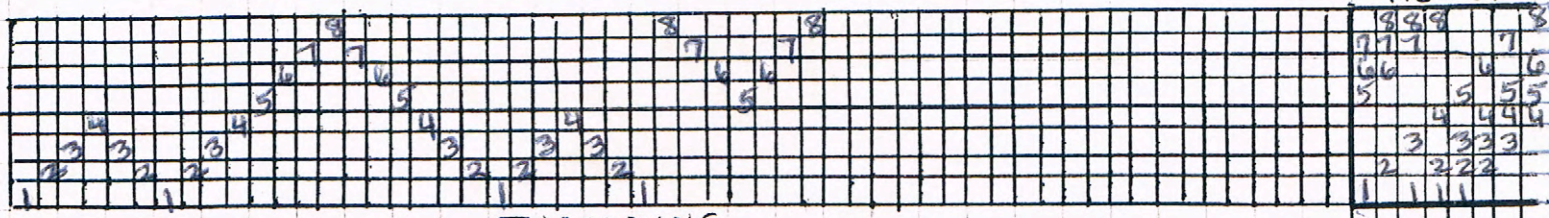


WILLIAMSBURG SPINNERS AND WEAVERS

TIE-UP



← 34 threads THREADING →

WARP: 5/2 pearl cotton, natural, 210 ends

WEFT: 3/2 pearl cotton, colors chosen by members of exchange

SETT: 15 EPI PPI: 15 PPI

PATTERN: an 8-harness twill

SOURCE: original variation on an idea from 8-10-12, Wertenberg

WIDTH IN REED: 14" WOVEN LENGTH: { 1" hem facing, 22" pattern & border, 1" hem

FINISHING PROCEDURE: serge ends/machine wash & dry

FINISHED LENGTH: 20" + 2" hem facings FINISHED WIDTH: 12"

NOTES:

I threaded 5 complete patterns, from the center out, and was left with 20 threads at each selvedge. I threaded those as straight twill in the direction of the pattern's last diagonal. This gave a border to my placemats. To continue the idea of the border, I treadled as:
 20 shots 5/2 natural (for hem) in tabby weave.
 2 1/2 repeats (20 shots) 3/2 pearl in straight twill (for border)
 10 pattern repeats w/ 3/2 pearl
 2 1/2 repeats (20 shots) 3/2 pearl in straight twill (border)
 20 shots 5/2 natural in tabby (hem)

NAME: Pam Franck

